



# Intensive Night Serum

Revitalize Your Skin's  
Natural Radiant Glow





**Tired of unpredictable,  
unsightly, and often painful  
acne breakouts?**

**Frustrated by dark spots  
and melasma that leaves your  
skin looking like a speckled  
patchwork of uneven  
skin tones?**

**Dejected over the growing  
number of lines and wrinkles  
appearing on your face?**

## **Intensive Night Serum is here to help!**

This daily skin treatment is an ideal addition to your bedtime cleansing ritual. Intensive Night Serum's carefully balanced composition helps eradicate the airborne environmental toxins, bacteria, facial oils, and makeup traces that can build up on your face each day. And with regular use, the serum's cleansing effects yield cleaner, clearer, and healthier skin!

# How Intensive Night Serum Rejuvenates + Restores Your Skin

With its potent combination of active ingredients, Intensive Night Serum exfoliates and revitalizes your skin, in addition to proving effective in treating and preventing acne, fading dark spots, eliminating pesky melasma, reversing visible signs of aging, and more! Here's a closer look at how Intensive Night Serum can benefit your skin...



At the same time, **Intensive Night Serum's** finely tuned combination of natural ingredients nourishes and rejuvenates your skin-Restoring its natural radiance.







## **Overview of Intensive Night Serum's Key Benefits**

The serum's powerful, proprietary compound yields cleaner, healthier, well-nourished skin; reduces or eliminates all forms of dark spots, sun spots, freckles, and melasma; smooths and tightens skin, lessening the appearance of fine lines and wrinkles, and helps diminish the visible signs of aging.



## **Acne Treatment + Prevention**

Mandelic Acid, Citric Acid, and Azelaic Acid combine to unclog pores, absorb skin oils, kill acne-causing bacteria, in addition to reducing black-heads and acne formation, while Alpha Arbutin lessens visible acne scars.



## **Combating Visible Signs of Aging, Reducing Wrinkles + Fine Lines**

L-Ascorbic Acid, Ferulic Acid, MSM, and L-Arginine help bind skin cells closer together, which smooths your skin's texture and protects its integrity against fine lines and wrinkles while also reducing inflammation that leads to wrinkles and other premature signs of aging.



## **Exfoliating + Rejuvenating Skin**

The serum's powerful astringent properties, derived in part from its combination of natural acids, function as a mild exfoliant that loosens, lifts, and removes dead and damaged skin, revealing the fresh and glowing new skin underneath.



## **Diminishing Dark Spots + Melasma**

Ferulic Acid, Glutathione, Tranexamic acid, Tranexamic Acid, and 4-Butylresorcinol block melanin production and limit its transfer to the skin's outer layer, which helps curb hyperpigmentation, dark spots, and melasma.



### **Acne Treatment + Reversing Hyperpigmentation Prevention**

Kojic Acid, Niacinamide, Tranexamic Acid, and 4-Butylresorcinol inhibit melanin production, which reduces the effects of hyperpigmentation by blocking the transfer of pigmentation to the skin that lead to dark spots and melasma while also lightening existing dark spots and melasma.



### **Brightening Overall Skin Tone**

Glutathione, Citric Acid, Kojic Acid, Niacinamide, and 4-Butylresorcinol act to reverse sun damage, diminishing the appearance of dark spots and melasma, in turn reducing the overall impact of hyperpigmentation, which considerably brightens your overall skin tone.



### **Low pH Ensure Ready Absorption + Maximum Impact**

With a 2.65 pH level (at room temperature), Intensive Night Serum is easily absorbed through the skin's natural moisture barrier, ensuring the serum's powerful rejuvenating ingredients exert full impact.



### **Strictly Water-Based Formula**

Night Intensive Serum is water-based and does not contain any alcohol, oil, or sulfur, eliminating common skincare formula agents that often irritate sensitive skin.



## Intensive Night Serum:

# A Potent Combination of Active Ingredients!

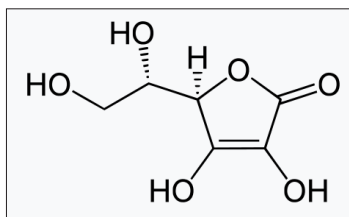
Intensive Night Serum owes its incredible results to a unique composition that includes over a dozen active ingredients.

Each element is specifically selected to serve a precise purpose in cleansing, lightening, and tightening your skin. All with the ultimate goal of restoring your skin to its peak look and feel.

Here's a list of Intensive Night Serum's primary ingredients, with details on how each component benefits your skin...

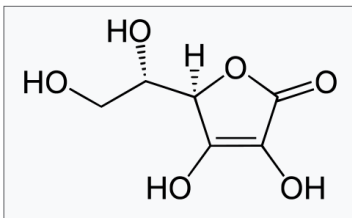
### L-Ascorbic Acid

A naturally-occurring vitamin C-rich compound that works at the cellular level to build-up and bind skin cells closer together, giving your skin a smoother, more youthful look & feel.



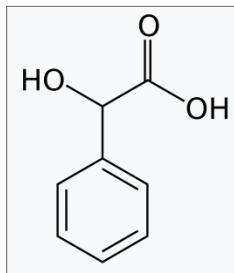
### Ferulic Acid

A powerful antioxidant (which also enhances the impact of other antioxidants) that helps protect your skin's overall integrity and works to reduce wrinkles, lines, and dark spots.



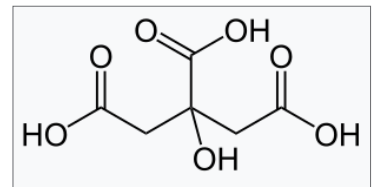
### Mandelic Acid

An alpha hydroxy compound that unclogs pores and reduces inflammation, which helps prevent further acne breakouts.



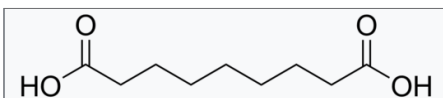
### Citric Acid

A natural antioxidant that absorbs skin oil and kills acne-causing bacteria, while also lightening acne scars, and diminishing signs of sun damage.



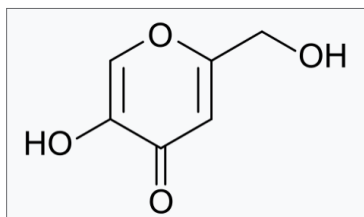
### Azelaic Acid

A potent natural acid that renews your skin and reduces blackhead and acne formation, while also killing acne-causing bacteria.



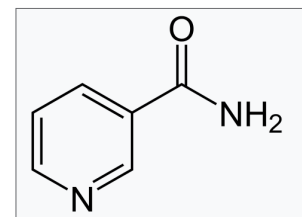
### Kojic Acid

A natural acid derived from a Japanese fungus that lightens age spots and facial scars, and also reverses the overall effects of sun damage.



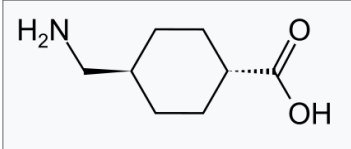
### Niacinamide

A concentrated form of Vitamin B3 that inhibits melanosome transfer, which significantly reduces hyperpigmentation and lightens overall skin coloration.



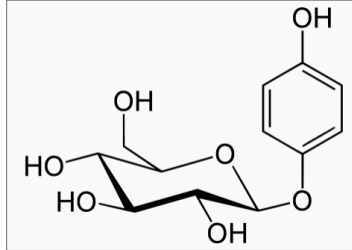
### Tranexamic Acid

A powerful natural anti-inflammatory that restrains melanin production and blocks pigment transfer to your skin's outer layer, which lessens the appearance of dark spots and melasma.



### Alpha Arbutin

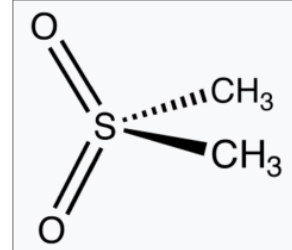
A berry extract that brightens your skin, while also diminishing acne scars and visible signs of sun damage.



### MSM

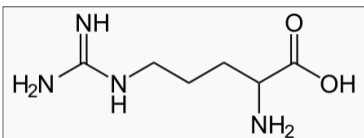
{Methylsulfonylmethane}

A natural sulfur compound that builds skin protein, reducing the inflammation that causes cellular damage and leads to wrinkles and other signs of premature aging.



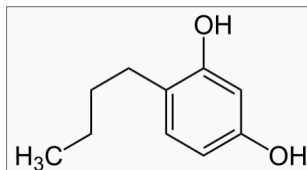
### L-Arginine

A protein-building amino acid that increases blood flow to your skin, rejuvenating malnourished or damaged skin cells.



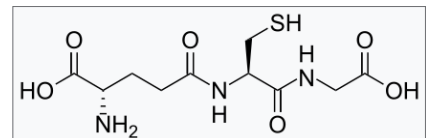
### 4-Butylresorcinol

A potent chemical compound (known to be among the strongest melanin inhibitors) instrumental in significantly reducing hyperpigmentation that causes dark spots and melasma.



### Glutathione

An antioxidant naturally found in plants and animals that lightens melanin's color in your skin by deactivating the pigment-producing enzyme tyrosinase.







## Intensive Night Serum Usage Guidelines



**Intensive Night Serum (as the name implies) is for nighttime use.**

We recommend incorporating the serum into your regular bedtime cleansing ritual.



**Intensive Night Serum** should only be applied after washing your face.



**Intensive Night Serum does NOT contain Paraben, Sodium EDTA, or other preservatives.** As such, we manufacture fresh serum every week and recommend having a new batch delivered weekly to ensure peak potency.



**Do not use Intensive Night Serum if the compound is oxidized!** When the serum turns a dark, amber color, it has become oxidized. After it changes color, the serum is unsuitable for use and should be discarded immediately.



**Patch test Intensive Night Serum to guard against a potential allergic reaction!** Intensive Night Serum contains Mandelic Acid, which is derived from bitter almonds and may cause an allergic reaction if you have nut allergies.



**Daily Usage May Result in Dry Skin.** Given Intensive Night Serum's potency, daily use, especially if you have sensitive skin, may cause pronounced dry skin.



## Application Instructions:

- Intensive Night Serum's highly potent compound may be too intense for those with sensitive skin, thus it's wise to begin using the serum gradually.
  - Start by applying Intensive Night Serum two or three times per week before bed.
  - As your skin grows accustomed to the compound, progressively increase usage until regular application becomes part of your nightly cleaning regiment.
- 
- When applying the serum (preferably at night, before bed), dispense 4 to 5 drops into your palm, and use your fingertips to spread the serum across your face, neck, and the v-wedge of the chest area below your face.
  - Apply Dermalure Hyaluronic Serum or a similar moisturizer of your choice after applying Intensive Night Serum, and re-apply moisturizer again in the morning.







## Intensive Night Serum Storage Instructions

Intensive Night Serum is a perishable product. To ensure the serum last for its full shelf-life and maintains maximum potency while in use, we recommend the following storage guidelines:

- Store the serum in a cool, dry place.
- Keep out of direct sunlight, as this will hasten oxidation and render the serum unusable.





# Thank You!

[www.dermalure.com](http://www.dermalure.com)

Tell: 877.336.4652

Fax: 888.552.0392

[Info@dermalure.com](mailto:Info@dermalure.com)