



RED CARPET PEEL

www.dermalure.com

Info@dermalure.com

Tell: 877.336.4652

Fax: 888.552.0392





Transform Your Skin in JUST ONE WEEK!

RED CARPET PEEL Series is a line of potent next-generation hybrid peel products capable of producing visible results after just one treatment.

Specifically designed to exfoliate damaged skin, this powerful, non-invasive chemical peel uses a synergetic compound featuring Alpha-Hydroxy Acids (AHAs), Beta Hydroxy Acids (BHAs), and additional exfoliating agents (Trichloroacetic Acid, Phenol, Retinaldehyde), combined with a topical anesthetics to achieve a superficial to medium depth peel.

RED CARPET PEEL'S Ultimate Goal

Ensuring your skin looks its VERY BEST and achieving that lofty goal safely is our ultimate aim. Clinically speaking, RED CARPET PEEL's objective is to remove damaged skin at a predictable and uniform depth, while minimizing potential complications, such as scarring and pigment changes. And as result, RED CARPET PEEL consistently improves the appearance and quality of your facial skin, no matter what your skin type.

How RED CARPET PEEL Can Help Significantly Improve Your Skin

Practically speaking, RED CARPET PEELS helps improve the tone, texture, and clarity of your skin.

Key benefits include...

- Reducing or eliminating age spots, freckles, and hyper-pigmentation (including melasma)
- Softening lines and wrinkles
- Reducing or clearing facial acne
- Diminishing the appearance of acne scars
- Producing collagen, which yields firmer, more youthful-looking skin

RECOVERY TIME + PEEL REPETITION FREQUENCY

The recommended recovery time when undertaking the RED CARPET PEEL ranges from 5 to 7 days. And this peel can be repeated monthly, if necessary, or as directed by your physician.



RED CARPET PEEL POTENT PLUS

RED CARPET PEEL POTENT PLUS features the same synergistic blend of ingredients included in the original Red Carpet Peel, but with a higher pH concentration. POTENT PLUS combines additional active ingredients, including, Kojic Acid, Glutathione, Tranexamic Acid, and Azelaic Acid. And the result is a more potent chemical peel that's roughly 7% stronger than the original Red Carpet Peel.

Key Benefits of RED CARPET PEEL POTENT PLUS

RED CARPET PEEL POTENT PLUS is suitable for any skin type, regardless of where your skin falls on the Fitzpatrick (skin tone measurement) Scale. Additionally, RED CARPET PEEL PLUS is significantly more effective for...

- Countering melasma and stubborn hyper-pigmentation issues
- Diminishing age spots
- Reducing or erasing fine lines wrinkles
- Lessening or eliminating acne
- Evening out overall skin tone
- Reducing or eradicating patches of rough skin caused by actinic keratosis

Additional POTENT PLUS Notes

POTENT PLUS is a medium depth, self-neutralizing peel with a chemical composition that naturally dissipates over time.

***IMPORTANT NOTE:** POTENT PLUS is NOT a starting point. Patients interested in using RED CARPET PEEL POTENT PLUS are required to complete a series of RED CARPET PEELS before stepping up to POTENT PLUS. A test patch application is also a pre-application requirement, and this also applies to prior RED CARPET PEEL users. Additionally, the recommended recovery time (for both the original and POTENT PLUS peels) ranges from 7 to 10 days.

RED CARPET PEEL Series pH Concentration Strengths

- MILD: 1.5 pH
- MEDIUM: 1.2 pH
- POTENT: 0.9 pH
- POTENT PLUS: 0.5 pH

RED CARPET PEEL

Key Ingredients

- **Retinaldehyde (Retinal)**

Helps improve your skin's feel, firmness, and elasticity, while also reducing the fine lines and wrinkles that accompany aging.

- **Trichloroacetic Acid (TCA)**

Exfoliates your skin and helps remove the appearance of fine lines, while also improving your skin's overall look and feel.

- **Beta Hydroxy Acid (BHA)**

Exfoliates your skin, diminishing wrinkling, roughness, and mottled pigmentation resulting from aging and sun exposure.

- **Resorcinol**

A potent antiseptic and disinfectant that help cleanse the bacteria and allergens that contribute to acne, dermatitis, eczema, psoriasis, and other similar skin conditions.

- **Phenol**

A powerful astringent that aids in deep cleansing the skin's surface & pores.

RED CARPET PEEL POTENT PLUS

Additional Ingredients

The POTENT PLUS formula includes all of the key active ingredients that makes RED CARPET PEEL one of the most effective chemical peels available, but POTENT PLUS incorporates four additional ingredients that amplify the peel's potency and increase its potential effects. These additional ingredients include...

- **Kojic Acid** - Lightens skin damaged by over-exposure to sunlight, age spots, age, and facial scars, in addition to cleansing microorganisms that contribute to a variety of skin conditions, including acne, dermatitis, eczema, and psoriasis, among others.
- **Glutathione** - A natural antioxidant known to lighten skin, ease skin inflammation, and combat psoriasis.
- **Tranexamic Acid** - A powerful anti-inflammatory that reduces melanocyte (melanin cell) production and blocks the cellular pigment transfer that contributes to melasma.
- **Azelaic Acid** - A naturally occurring acid that expedites skin rejuvenation, thereby reducing the formation of pimples and blackheads, and cleanses the bacteria that contribute to acne and rosacea.

RED CARPET PEEL's Proprietary Blend of Acids + Antioxidants Can Help...

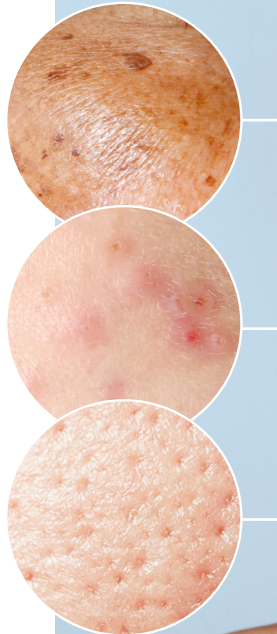
Improve your skin's feel, firmness, and elasticity.

Reduce the appearance of fine lines, wrinkles, and areas of rough texture often more noticeable with age.

- Diminish hyperpigmentation, melasma, acne scars, and sun damage.
- Promote collagen growth, increasing blood flow to the treated area, which prevents sagging and gives your skin a plump, youthful glow.
- Exfoliate, disinfect, and cleanse your skin's outer layer (dermis) and pores.
- Decreases exfoliation pain and calms your skin (during the treatment).
- Enables your skin to readily absorb nutrients vital to keeping you looking fresh & youthful.

RED CARPET PEEL POTENT PLUS Additional Ingredients Can Help...

- Curb acne, blackheads, and other skin blemishes.
- Combat persistent & unattractive skin conditions, including dermatitis, eczema, psoriasis, & rosacea, among others.
- Eases facial swelling that gives skin an unnatural, bloated look.
- Reduces the factors that contribute to signs of melasma.



**RED CARPET PEEL
Series Products
Are Ideally Suited
to Treat...**

- Acne and other similar facial blemishes.
- Facial scarring resulting from acne and other disfiguring skin conditions.
- Skin discoloration resulting from age or liver spots, sun damage, freckles, and skin uneven tones.
- Wrinkles, especially the fine lines under your eyes and around your mouth that tend to increase with age.
- Unsightly brown blotches resulting from melasma.
- Rough or scaly skin.

**Key Advantages
of RED CARPET
PEEL's Proprietary
Formula**

There is no shortage of skincare products on the market today. What sets RED CARPET PEEL apart from the alternatives?

The RED CARPET PEEL...



- Counteracts sun damage, acne, facial scarring, and hyperpigmentation, regardless of your skin type.
- Rejuvenates the skin on your face, neck, and hands.
- Provides a consistent and predictable peel resulting from a carefully balanced combination of ingredients.
- The treatment is available in Mild, Medium, Potent, and POTENT PLUS strengths, & can be customized for your individual needs, including carefully metered skin depth penetration control.
- Includes a topical anesthetic to ensure a comfortable and pain-free procedure.
- At less than \$9 per treatment, it's the most cost-effective chemical peel available today.

What Patients Should Consider Before Using RED CARPET PEEL

There are several important factors patients and practitioners should keep in mind before using RED CARPET PEEL. These include...

- Severity of actinic damage
(rough, scaly patches resulting from excessive sun exposure)
- Depth and number of wrinkles
- Skin tone and texture
- Skin sensitivity
- Need for additional or alternative procedures

Fitzpatrick's Scale Measurement

Evaluating the patient's skin type based on Fitzpatrick's Scale of sun-reactive skin types is another key component of the evaluation process. This is a critical concern because judging a patient's skin based on Fitzpatrick's scale can help determine a peel's results. Those with lighter skin types are unlikely to see abnormal pigment changes. But those with darker skin may experience hyper-pigmentation or hypopigmentation.

Patient Medical History Review

A patient's medical history should be thoroughly reviewed before administering a chemical peel. Patients with pre-existing cardiac, hepatic, or renal conditions or diseases should either not have a chemical peel or do so only with the use of a carefully selected peeling agent. The use of exogenous estrogens, oral contraceptives, and other photosensitizing medications have been reported to cause unpredictable pigment changes. Patients should avoid using these medications for several weeks before and after having a RED CARPET PEEL. Patients who have had radiation treatment or are currently taking Isotretinoin (Accutane) are strongly discouraged from having a chemical peel, as their skin will heal very slowly following the peel, and facial scarring is much more likely. Additionally, patients who are currently pregnant or nursing should definitely not have a chemical peel. And finally, a patient should consult with a Medical Doctor or Dermatologist before having a chemical peel (or any non-invasive skin treatment procedure new to the patient).

Additional Patient Preparation

A RED CARPET PEEL patch test must be administered 24 to 48 hours prior to the full treatment to ensure the patient experiences no adverse reactions to the peeling agent.



The Procedure, What to Expect

The RED CARPET PEEL application is a 2-step process that lasts roughly 10 minutes. Prior to the application, the patient should wash their face with soap or a gentle cleanser to remove any remaining traces of makeup or oils. But should avoid heavy scrubbing in the process.

STEP 1

Apply Red Carpet Prep Solution

- Wipe the treatment area with Red Carpet Prep Solution (an acetone-alcohol compound that helps prevent uneven penetration of RED CARPET PEEL).
- Apply 2-3 layers of the prep solution with a 2x2 gauze sponge.
- Apply the solution to the cheeks, moving from medial to lateral areas, followed by the chin, and forehead.
- Allow prep solution to air dry using a fan for 10 minutes.

STEP 2

Apply Red Carpet Peel

- Gently apply the first layer and allow it to air dry for about one minute.
- Apply additional layers; 2-3 layers (for first-time users) or 3-4 layers (for repeat users).

Application Guidelines + Procedural Notes

Rubbing on the peeling agent yields deeper penetration and more efficient results than just blotting. However, the solution should only be rubbed on patients who have received prior RED CARPET PEEL treatments. During the procedure, the patient may experience stinging, burning, redness, tightness, and general sensitivity, in addition to mild swelling. An electric fan blowing cool air onto the patient's face during treatment can help relieve this discomfort. If the patient experiences irritation during the procedure, rinse off the solution immediately, and apply a protective ointment, such as petroleum jelly to soothe the skin.



Pre-Procedure and Application Precautions

- The peel product should always be kept at least a half of an inch away from the eyes and mucus membranes (just inside the nose)
- If the skin is severely irritated by the peel product, immediately rinse with cool water to remove the solution.
- Do not apply the peel product to irritated or sensitive skin, or to skin with open wounds or after extraction.
- Wait for 4 to 6 weeks (or as directed by your physician) before reapplying the peel product.
- Women who are pregnant or nursing should not use peel products.
- Do not apply to anyone suffering from a sunburn.
- Do not apply to anyone currently taking Accutane or anyone who has been taking Accutane within the last 6 months.
- Do not apply the peel product to skin that has been waxed or shaved within 24 hours.
- The peel product application causes a stinging sensation, this feeling is entirely normal

General Post-procedure Patient Instructions

The patient should leave the Red Carpet Peel solution on for 6 hours after the application to achieve maximum results. The solution can be left overnight, assuming the patient is not experiencing any irritation. The patient should not apply moisturizer until the peeling begins, unless they experience discomforting irritation, tightness, or dryness. If the patient feels using a moisturizer is absolutely necessary, Hyaluronic Serum is recommended. Additionally, if the patient's skin feels particularly irritated or appears red after the peel is complete, they can apply 1% Hydrocortisone (topical steroid cream) or Aquaphor (concentrated healing ointment).

Post-procedure Care Guidelines

Patients must be strongly cautioned to diligently follow the post-peel care regimen. Adherence to this routine is critical to ensure proper healing and avoid complications. Failing to follow proper post-peel protocol puts patients at high risk for potentially disastrous complications.

Peel Product Storage Instructions

- Close the peel product bottle tightly, ensuring the cap remains securely in place.
- Store in a cool, dry place, away from direct sunlight.
- Do not refrigerate.
- Keep out of reach of children at all times!



Hyaluronic HA 1%

Alleviating dry skin, reducing the appearance of fine lines & wrinkles, and speeding up wound healing.

The following guidelines are intended to help the treated area heal as quickly and efficiently as possible.

- Apply a generous amount of protective ointment, such as petroleum jelly, to the entire treated area.
- Patients should reapply the ointment throughout the day, any time the face feels tight or dry.
- As the outer layers begin to shed, the patient is allowed to shower and gently wash their face with soap that does not leave a residue, using only their fingertips.
- After showering, the patient should pat the face dry and apply additional protective ointment.
- The patient should not pick at their face during the recovery period.

It's important to make it absolutely clear to patients that post-treatment instructions are part of the healing process and integral to the overall success of the peel treatment.

Patients should be made aware of potential post-treatment symptoms, including possible facial edema (swelling), which may contribute to issues such as diplopia (double vision).

If the patient is prescribed antibiotics, they should continue with that medication until the re-epithelialization (skin healing) is complete. The patient should be re-examined within 48 hours of the procedure, and then again every several days after the initial follow up.

Patients should be instructed to read the patient information guide, and carefully follow the instructions until their face is healed to the satisfaction of their attending physician.



Complications

RED CARPET PEEL is intended to profoundly improve the quality of the recipient's facial skin. However, there is also the possibility of unintended complications. Both the quality of the results and the potential for complications are usually related to the peel depth. Generally speaking... The deeper the peel, the more pronounced the results. But also, also the higher the incidence of complications. Additionally, those with darker skin types are more likely to experience complications. And certain peeling agents are also more apt to yield unintended complications.

Sun Sensitivity

The skin is typically sensitive to the sun following a chemical peel, and over-exposure to sunlight can also result in hyper-pigmentation. Patients should wear high SPF sunscreen daily for 6 to 12 months following a chemical peel.

Erythema

Erythema, a condition that yields red, irritated skin patches that sometimes occurs following a chemical peel, typically subsides within 90 days. But the condition may become prolonged and even manifest as hyperpigmentation.

Interactions With Certain Medications

Patients taking oral contraceptive pills, exogenous estrogens, or other photosensitizing medications are at higher risk for complications like erythema and hyper-pigmentation. However, topical hydrocortisone lotion, along with a short course of systemic steroids may alleviate these unfortunate side-effects more quickly. Other treatment options for hyper-pigmentation include trans-retinoic acid, glycolic acid, or hydroquinone.

Pruritus

Pruritus, an uncomfortable skin sensation that prompts the urge to scratch, another commonly reported side-effect, can be treated with oral antihistamines.



Hypo-pigmentation

Hypo-pigmentation, which typically results from melanocyte (the cells that produce melanin) destruction or inhibition, is another potential complication. Hypo-pigmentation is more noticeable with patients that have darker pigmentation. Hypo-pigmentation may not be readily apparent until erythema has subsided, but at this point, the condition is unfortunately permanent.

If Hypo-Pigmentation Occurs...

The variation in skin tone is most noticeable in the transition between treated and untreated skin. Prior to the peel, while the patient is sitting upright, note the position of the skin draping over their jawline. The peel application can be feathered along this natural line of shadowing to create a transition zone. The feathering effect can be achieved by using a less concentrated peel solution or by applying less of the peeling agent along the transition zone. Camouflage makeup can also be used to conceal hypo-pigmentation and other unwanted pigment variations. As such, patients should be shown how to properly apply camouflaging makeup.

PATIENT EDUCATION GUIDE

General Post-Procedure Instructions

- The peel should remain on your skin for at least 6 hours (or as directed by your physician) following the application.
- After the application period passes, gently wash the treated area with cool water.
- Significant, visible peeling will begin within 36 to 72 hours, and will gradually taper off over the week following the treatment.
- Temporary pigment changes and skin discoloration occasionally occur.
- If you experience pronounced discomfort or pain, fever, or a change in skin color, contact your physician immediately.

Day 1 (Immediately After The Peel)

- Your skin will appear red, similar to a sunburn, or sometimes darker.
- Keep the peel solution on the treated area for at least 6 hours following the peel.
- During the first 6 hours, do not wash, touch, rub or apply make-up to the treated area.
- You're free to resume most normal activities immediately following the peel, but you should avoid heavy exercise or any activity that causes excessive sweating for at least 2-3 days following the treatment.
- Avoid sun exposure (for the next two weeks at a minimum).
- Do not wear makeup or use any other skin products.

Day 3-6

- Peeling typically begins on Day 3.
- Peeling is likely to be more severe around your nose and mouth, due to facial movement.
- Peeling will then continue to move outward (from your nose and mouth) toward your forehead and cheeks, and then down to your neck.
- When the peeling begins, apply Hyaluronic Serum or Aquaphor to the treated areas 2-3 times a day to control the peeling and relieve any facial skin tightness.
- This moisturizer should be used for one (1) week by Caucasian patients, and or two (2) weeks by Asian, Hispanic, and African American patients.
- Do not rub, pick at, or pull on the skin; the peeling must happen naturally to avoid scarring.
- Gently wash (do not scrub) and dry the treated area in the morning and at night.
- Continue to apply Hyaluronic Serum or Aquaphor as needed.
- Apply SPF 30+ sunscreen every two hours during any prolonged sunlight exposure (which should be avoided if at all possible).

Day 7

- The peeling process should be almost complete, but mild skin sloughing may still occur from the treated area.
- Continue to protect the skin with daily application of SPF 30+ sunscreen.
- Avoid products containing AHAs (alpha-hydroxy acids), salicylic acid, retinoids, or other potentially irritating topical lotions until your skin is fully healed.
- Do not apply make-up on the treated areas if your skin is sensitive.
- Avoid using abrasive or exfoliating sponges or cleansers on the treated area.
- Avoid sun exposure, artificial tanning devices, and direct heat sources until your skin is fully healed.
- Use a broad-spectrum sunblock with Zinc Oxide and Titanium Dioxide.
- Wear protective clothing (wide-brimmed hat) if you're unable to avoid exposure to direct sunlight.
- Do not peel, pick, scratch, or scrape your skin while it's healing.
- Do not wear a mask or tight headbands, hats, etc... while your skin is healing.

Legal Disclaimer

IMPORTANT NOTE: For Professional Use Only. If inexperienced in the application of chemical peeling agents, use at your own risk! Dermalure is not liable for any damage to skin or body-part damage resulting from the use of our products. We strongly recommend that only a trained professional apply and monitor the application of our products. We are not responsible for any ill effects that impact users who choose to ignore our recommendations and fail to consult with or engage the services of a properly trained professional in the application of our product. This website and the materials and products showcased here-in are presented entirely "as is" and only intended to serve for informational purposes. We do not make any warranties whatsoever regarding the results or efficacy of our products, whether express or implied. To the fullest extent permissible pursuant to applicable law, Dermalure.com denies all warranties, express or implied, including, but not limited to, implied warranties of merchantability and fitness for a particular purpose and noninfringement. Dermalure.com does not assert or warrant that this site will function in an uninterrupted or error-free manner, that any potential defects will be corrected, or that this site or the server that makes the site available is free of viruses, malware, or other harmful components. Dermalure.com does not make any warranties or representations regarding the use of the materials described in this site in terms of whether they are correct, accurate, adequate, useful, timely, reliable, or otherwise.